

plas-aid

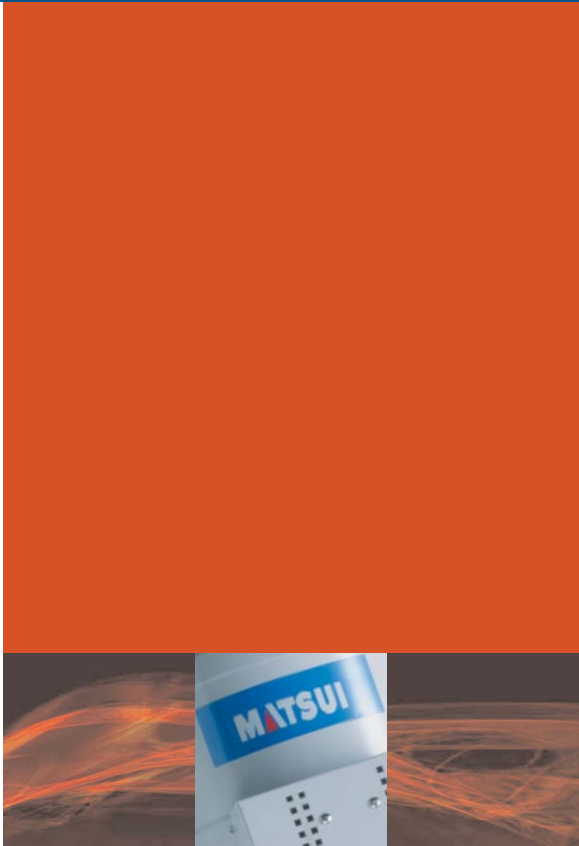
The reliable choice in mold temperature controllers

FULL-FEATURED

ECONOMICAL

PORTABLE

GMC SERIES



Introducing the **GMC Series**

Mold Temperature Controller.

Reliable, full-featured unit

in a compact, **portable** design.

Only from Matsui.

GMC SERIES

Take a look at what the new GMC offers

PRECISION CONTROL AND ECONOMY

The extremely economical GMC Series maintains the optimum production temperature to within $\pm 0.5^\circ$ by sampling temperature two times every second. As a result, target temperatures are hit with precision and are accurately maintained cycle after cycle, maximizing your output and minimizing rejects. SPI communication is standard.

VIRTUALLY MAINTENANCE FREE

The GMC is engineered to last. The heater control uses maintenance-free, solid state relays. And all critical internal components are constructed using stainless steel. You just plug it in and forget it.

TOUCHPAD PROGRAMMING

An easy-to-use touchpad simplifies programming, enabling you to preset operations, monitor settings, view progress and make changes effortlessly.

ENERGY-SAVING CONSTRUCTION

The unit's precision control software and technologically advanced circuitry, along with an energy efficient, insulated heater tank (A & H models) provide significant energy savings and reduces heater "on" time up to 8%. In addition, heater pump sizes are optimized for performance, minimizing energy consumption.

PACKED WITH STANDARD FEATURES

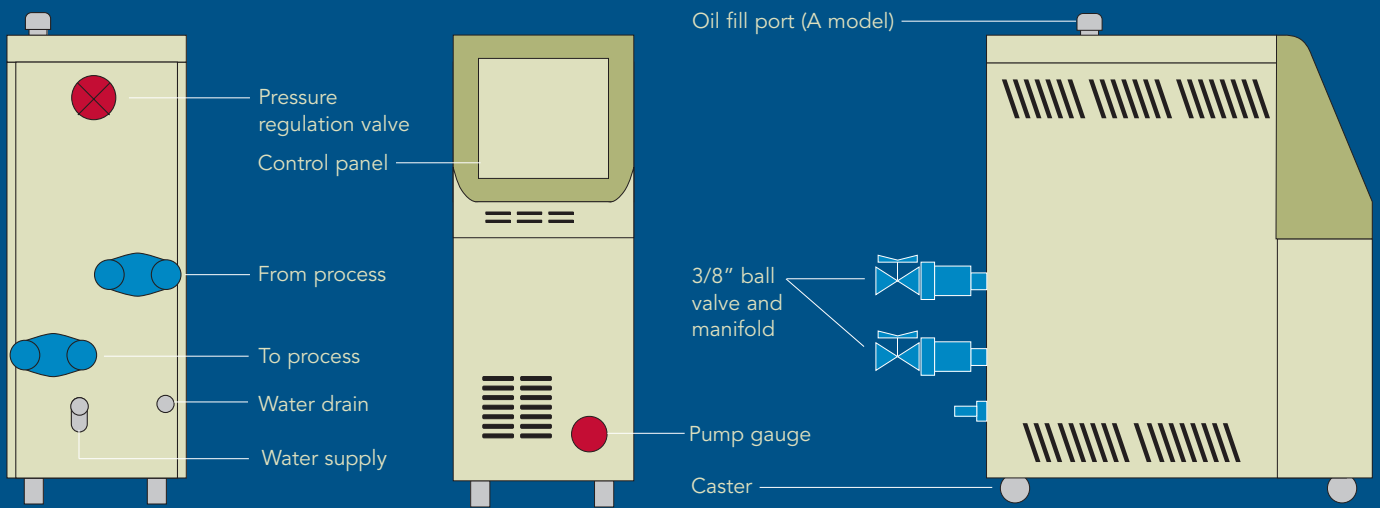
The GMC Series comes complete and ready to integrate into production. Units come with 2-way or 4-way manifolds and ball valves, ready to install. In addition, it includes an adjustable pressure bypass valve, allowing you to tailor and optimize performance for different jobs. Even casters are included in this compact unit so it rolls easily into each new production station.



Consistent temp control for quality part production

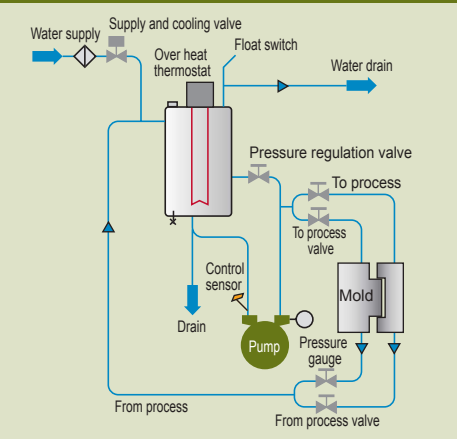
COMPACT PORTABLES FOR EVERY NEED.

GMC mold temperature controller features

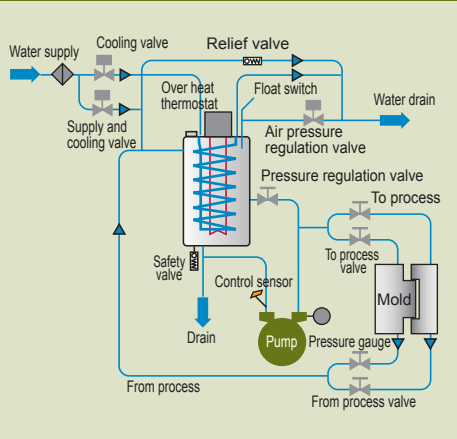


Flow charts

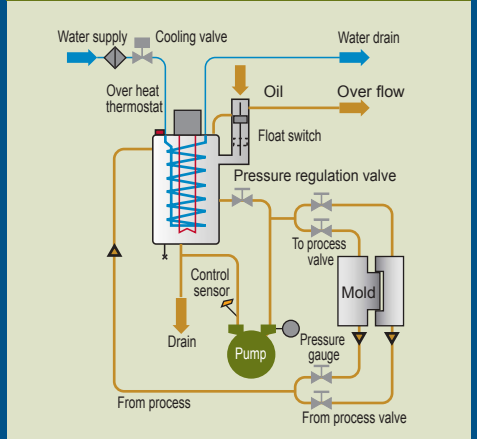
LOW TEMPERATURE WATER



HIGH TEMPERATURE WATER



HIGH TEMPERATURE OIL



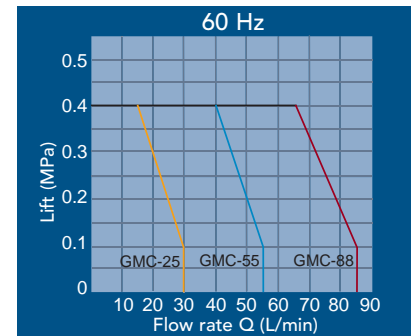
GMC SERIES SPECIFICATIONS

GMC MODEL	GMC-L-25U GMC-H-25U GMC-A-25U GMC-L-55U GMC-H-55U GMC-A-55U GMC-L-88U GMC-H-88U GMC-A-88U								
POWER SUPPLY VOLTAGE	230V or 460V, 3ph 60 Hz								
MEDIA*	Water	Water	Oil	Water	Water	Oil	Water	Water	Oil
MAXIMUM TEMPERATURE (°F)	203°F	248°F	320°F	203°F	248°F	320°F	203°F	248°F	320°F
PUMP MOTOR (HP)	0.4			0.8			1.3		
PUMP PERFORMANCE†	Refer to the pump performance curve								
HEATER CAPACITY	3kW			5kW			8kW		
HEATER TANK MATERIAL	Stainless steel (SUS304)								
HEATER TANK CAPACITY (GAL)	0.4	0.9	0.5	1.2	0.7	1.5			
TEMP CONTROLLER CONTROL OPERATION	Heating, Cooling, PID operation								
TEMP CONTROLLER INPUT	K type thermocouple								
TEMP CONTROLLER SETTING/DISPLAY	Digital setting, digital display								
ALARMS INDICATED	Reverse phase, pump overload, sensor abnormal, medium level low, upper limit, lower limit								
OVERHEAT PROTECTION	Circuit breaker with shunt trip + fixed thermostat								
WATER LEVEL DETECTION	Float switch								
PRESSURE GAUGE	Ø 50 x 1MPa								
WATER SUPPLY PORT	3/8 B X 1 Hose nipple + strainer								
WATER DRAIN PORT	3/8 B X 1 Hose nipple								
TO PROCESS PORT	3/8 B X 2 ball valve						3/8 B X 4 ball valve		
FROM PROCESS PORT	3/8 B X 2 ball valve						3/8 B X 4 ball valve		
APPROX. SHIPPING WEIGHT (LBS)	100	110	122	133	155	165			
APPROXIMATE DIMENSIONS (INCHES)*	9x20x23H			9x22x24H			12x23x29H		

*Water to be fresh, soft water

**Outer dimensions do not include piping

+PUMP PERFORMANCE



Matsui America

www.matsuiamerica.com

CHICAGO HEADQUARTERS

1250 West Lunt Avenue | Elk Grove Village, IL 60007 | T 847-290-9680 | F 847-290-9685

LOS ANGELES OFFICE

1240 North Lakeview, Suite 180 | Anaheim, CA 92807 | T 714-693-1101 | F 714-693-1345